

PRICE'S LANDING A RIVERFRONT VISION

Summary Presentation
2013

Vision for the Western Riverfront

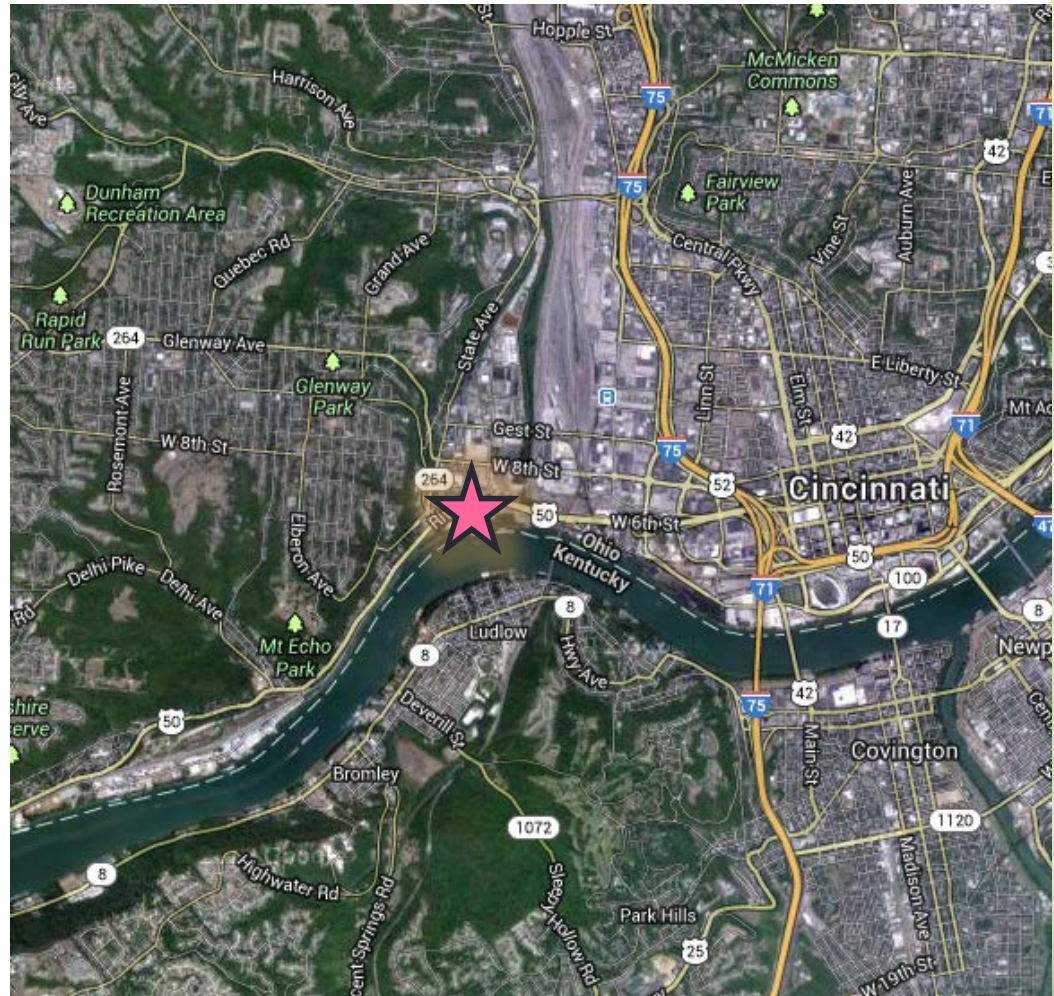


Connecting Multiple Recreation Opportunities

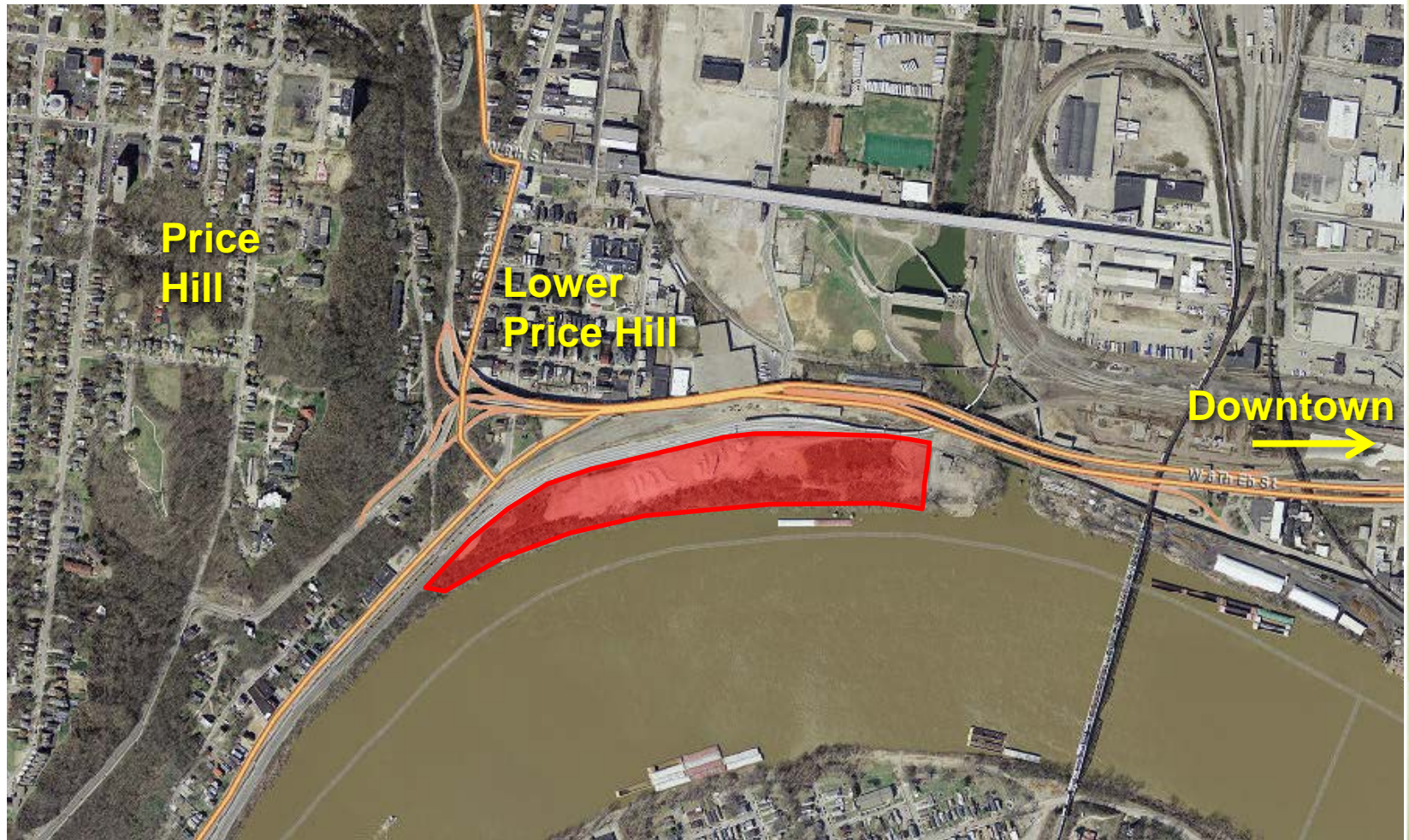
- The Western Riverfront spans 22 miles from downtown to Shawnee Lookout
- Existing active and passive greenspace can be leveraged with phased trail construction
- The goal is to connect all of these areas with a trail running along the river

Area Context

- 16 acres of unused land between River Road and the Ohio River
- This presents the perfect opportunity for the communities of Lower Price Hill, East Price Hill, Sedamsville and Riverside
- Zoned RF-R Riverfront recreation

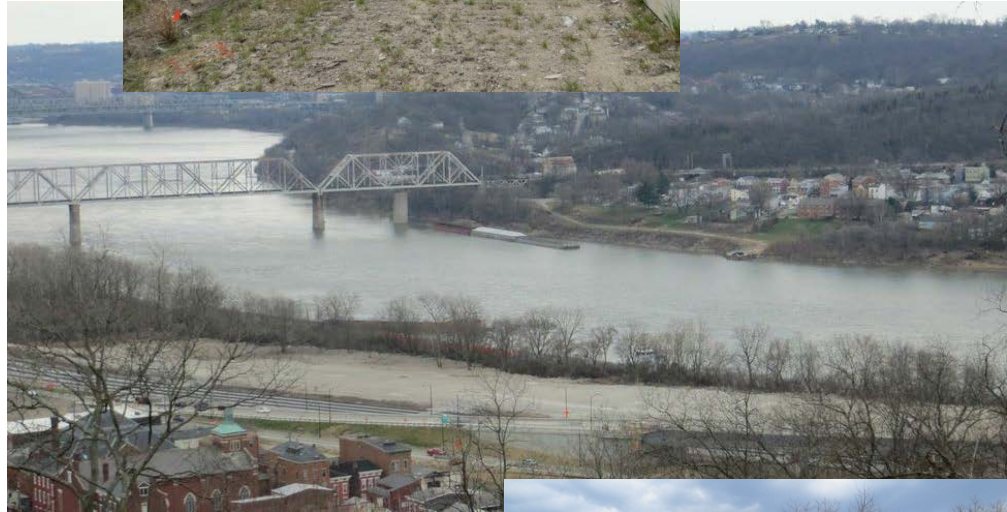


The Site



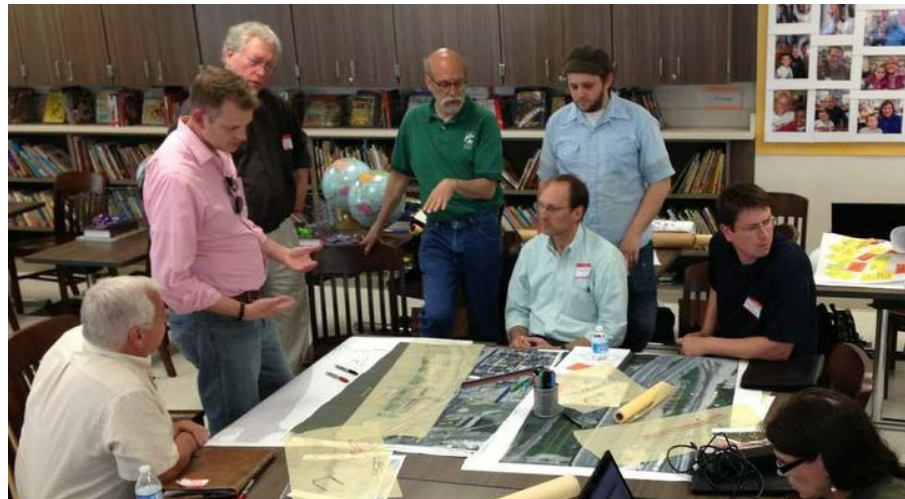
The Site

- Approx. 2,800 ft long (just over a ½ mile)
- Close to Downtown
- Westside Gateway
- At the confluence of the Mill Creek and the Ohio River
- Continuation of the River West Trail
- River and City Views



The Vision Session

- Sat, May 4, 2013
- Community Input
- 4 Breakout Groups
 - Access
 - Amenities
 - Recreation
 - Nature
- Designer's Studio Session
- Summary Presentation



Price's Landing: A Natural River Park

- This gateway park reclaims the riverfront ecosystem as a recreational and educational experience.



Access

- Bike & pedestrian access from State Avenue
- All ages/abilities access
- Proximate parking south of tracks
- Regional accessibility
- Access to river uses & river trails
- Visible & inviting
- Access road – celebrated means of entry



Amenities

- Launch for kayaks/canoes
- Multi-purpose amphitheater
- Food trucks
- Bathrooms
- Raised viewing areas
- Public art
- WiFi access



Recreation

- Fishing
- Safe access to river's edge
- Canoe and kayak launch
- Walking trail
- Par-course
- Multi-purpose grass field
- Water element (active play)
 - Not duplicating Evans
- Picnic/shelter



Adjacent Amenities

Consider Including

- Skate park – in park or under viaduct
- Dog park
- Volleyball
- Horseshoes
- Putt-putt



Nature

- Native plants
- Minimal hardscape
- Safe, easy access to water's edge
- Outdoor classroom
- Disbursed exhibits/kiosks
- Research: weather/river gauges
- Environmental station
- Natural cultivation/landscape, various types
- Earthworks - amphitheater, mounds



Character

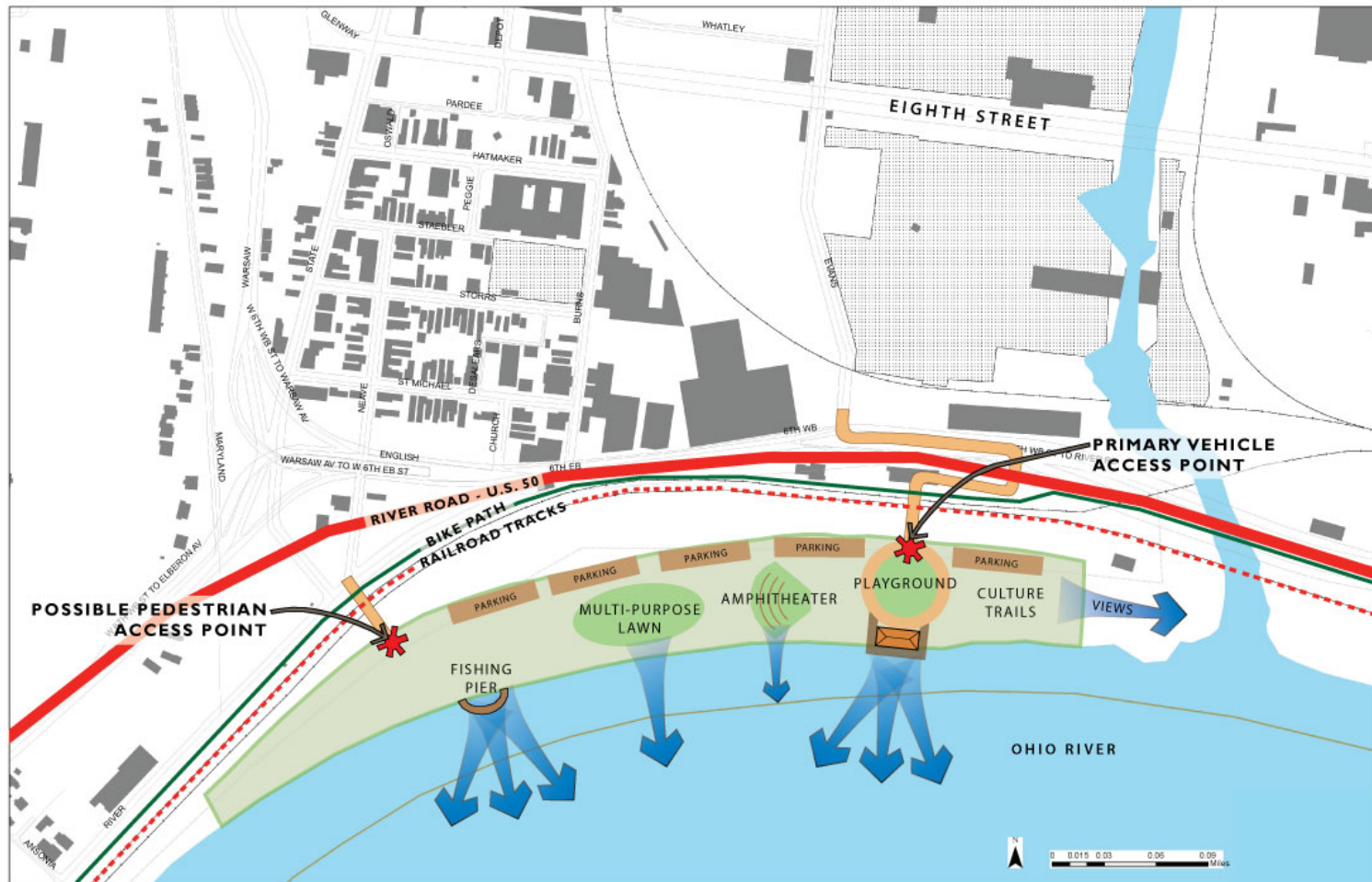
- Cultural/historical ties to R.R., river, underground railroad, incline, riverboats
- Gateway to the west

Sustainability

- Green lighting
- Reuse gravel as building material on-site



Conceptual Diagram



Thank You

- Lower Price Hill Community Council
- American Institute of Architects Cincinnati Urban Design Committee
- East Price Hill Improvement Association
- Sedamsville Civic Association
- Riverside Civic & Welfare Club
- River West Working Group
- Architecture for Humanity Cincinnati Chapter
- American Planning Association Cincinnati Section
- Oyler School
- All who participated in the Visioning Session